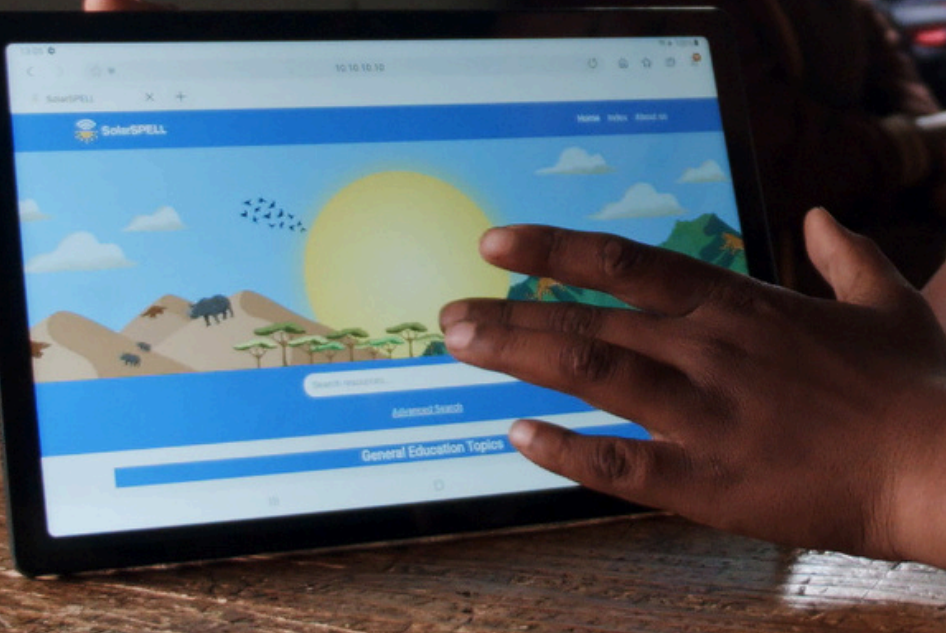




# Hardware Data Sheet

The SolarSPELL digital library provides access to information and digital skill-building for the half of the world still offline.

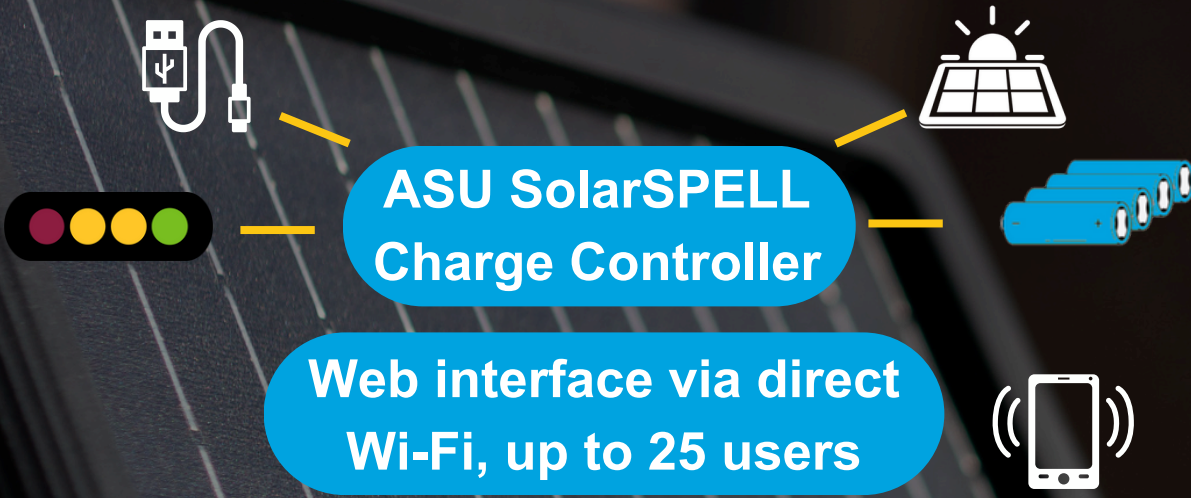


**SolarSPELL's new digital library hardware is now even easier to use.**

## Intelligent charge control technology

optimizes energy use and allows users to check how much battery life is left using a display on the case or our offline web interface.

The streamlined case is water-, shock-, dust- and heat-resistant, and it includes usage instructions on the back.



Battery		Charging	
Capacity (mah)	10,000	Fastest Solar Charge	4 hours
Voltage (V)	3.7	Fastest USB charge	8 hours
Draw (amps)	1	Solar PV Panel	
Life cycle (charge cycles)	2000	Voltage	12
Cells	Four 18650 Style	Wattage	10
Battery material	lithium-ion	Waterproof	IP67
Charge controller		UV	ETFE coating
PV Panel Input (v)	3-30	PV Cells	High efficiency monocrystalline
RPi interface	HAT style	Complete System	
Max system ampere	3	Weight	2.8 lbs./1.27 kg
USB Charging	1.5 amp max	Material (housing)	+90% Recycled Plastics
MPPT	Yes	Size	10x12x1.5 in/25x30x4 cm
Digital user interface	Web page + LED	Life Span	10 years
On/Off	Intelligent timed switch		
ASU Engineered	Yes		



Powered by  
**Raspberry Pi**