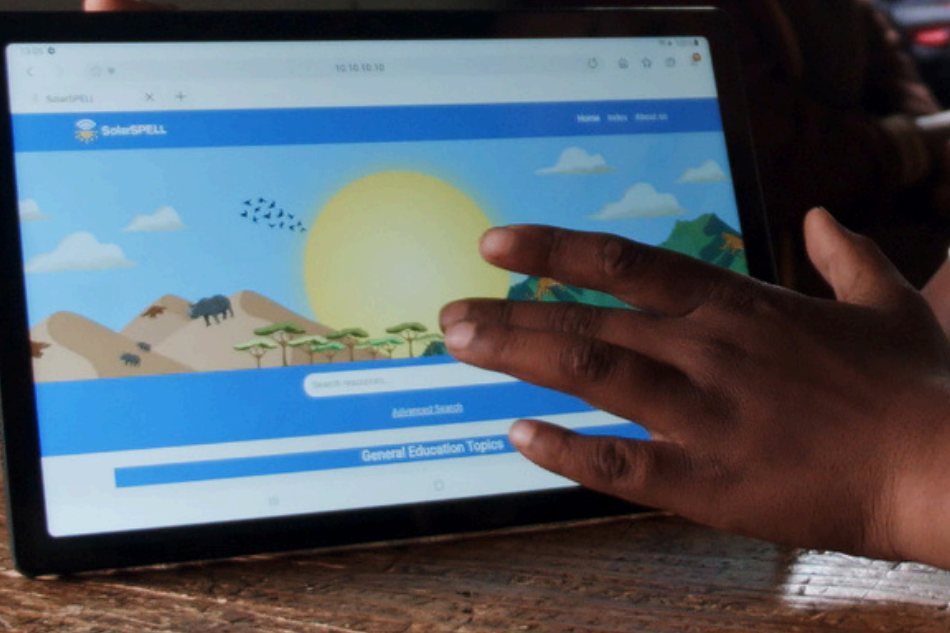




Hardware Data Sheet

The SolarSPELL digital library provides access to information and digital skill-building for the half of the world still offline.

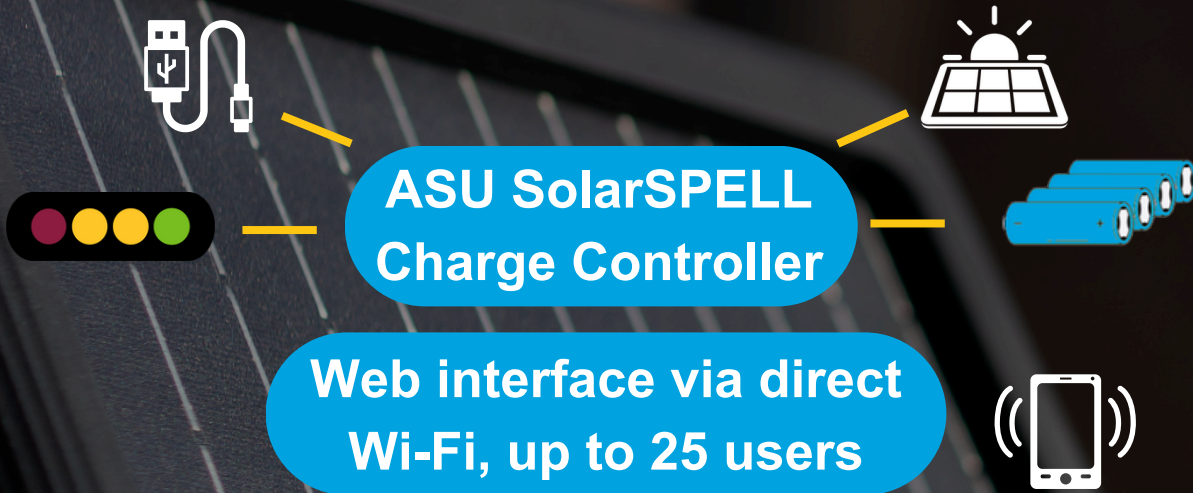


SolarSPELL's new digital library hardware is now even easier to use.

Intelligent charge control technology

optimizes energy use and allows users to check how much battery life is left using a display on the case or our offline web interface.

The streamlined case is water-, shock-, dust- and heat-resistant, and it includes usage instructions on the back.



Battery		Charging	
Capacity (mah)	10,000	Fastest Solar Charge	4 hours
Voltage (V)	3.7	Fastest USB charge	8 hours
Draw (amps)	1	Solar PV Panel	
Life cycle (charge cycles)	2000	Voltage	12
Cells	Four 18650 Style	Wattage	10
Battery material	lithium-ion	Waterproof	IP67
Charge controller		UV	ETFE coating
PV Panel Input (v)	3-30	PV Cells	High efficiency monocrystalline
RPi interface	HAT style	Complete System	
Max system ampere	3	Weight	2.8 lbs./1.27 kg
USB Charging	1.5 amp max	Material (housing)	+90% Recycled Plastics
MPPT	Yes	Size	10x12x1.5 in/25x30x4 cm
Digital user interface	Web page + LED	Life Span	8 years
On/Off	Intelligent timed switch		
ASU Engineered	Yes		



Powered by
Raspberry Pi